



THE BRITISH EDUCATION CENTRE
(FOR HIGHER EDUCATION & INTERNATIONALLY APPROVED QUALIFICATIONS)
Member of The International Education & Training Partnership Ltd.



In association with  **International**

**Expressions of Interest
(BEC International- Affiliated Provider)
Closing Date for investors' applications (30th May)**

[this operation is scheduled to run from October of each year]

**The International Education & Training Partnership Limited
BEC Administration Unit
Jonah House
Norman Road
Westgate
Kent. CT8 8RR**

Email: information@britisheducationcentre.co.uk
enquiries@britisheducationcentre.co.uk

Telephone: (+44) 1843 237513
Fax: (+44) 1843 835557

www.britisheducationcentre.com



THE BRITISH EDUCATION CENTRE
 FOR HIGHER EDUCATION & INTERNATIONALLY RECOGNISED QUALIFICATIONS
 Member of The International Education & Training Partnership Ltd.



Expressions of Interest (Guidelines)

- **The British Education Centre (BEC)** is a member of the International Education & Training Partnership (IETP) in the United Kingdom (For further information about the IETP see pages 5 & 6 in this document).
- **The IETP consists of known UK universities and colleges** mostly from across the south east of England; all working together in promoting & delivering Higher Education programmes within appropriate locations/regions in the following countries.

| | | | | |
|----------------|----------|-----------|-----------|------------|
| * Saudi Arabia | * Qatar | * Bahrain | * Oman | * Kuwait |
| * Dubai | * Yemen, | * Jordan | * Syria | * Lebanon, |
| * Libya | * Iran | * Algeria | * Morocco | * Tunisia |
| * Sudan | * Turkey | | | |

Expressions of Interest (from Education Providers-Investors)

- BEC invites skilled and experienced local providers of higher education in the above countries to help market and deliver the IETP's higher education programmes up to the highest possible standards.
- All BEC's affiliated providers in the above countries must work in line with the requirements of the universities and colleges in the UK, as well as comply with the standards of Higher Education as currently implemented across the UK and within their home country.
- Any nominated institute to become a BEC provider in one of the above regions must in the first instance provide an outline to consist of adequate and reliable evidence (supporting documents) detailing the following:
 - i) Information (including photographs) of proposed educational premises, from which a suitable and attractive BEC learning environments & facilities will be made available for adult learners. Such requirements must be assessed as conducive to learning and for students' development needs.
 - ii) The premises must be suitable for providing education to both female and male students (either mixed or separate) and should have potential capacity for at least 300 students. For this, the institute should initially secure a minimum of 75 students of both genders, and to average no less than 15 students per programme (at least 5 programmes will be launched in the first academic year).
 - iii) Both the Institute and its management team must have reputable local status. This is by being known as a quality educational provider and as individuals with excellent references (minimum two references from known official/relevant sources for the Institute/per staff member). The nominated BEC management team in an institute will enter and agree to take on full responsibilities for the operation, development, marketing, and finance in line with the IETP's standards and recommendations at all times.
 - iv) Should identify and provide details of tutors able to deliver higher education programmes and who are fluent in the use of English Language (writing, speaking and reading). All selected BEC staff should be of graduate calibres (preferably from universities in Western Europe, Canada, Australia or the USA) and have knowledge in working in adults learning environments, hence able to interact with learners using group-work and 1-1 support skills. Each selected tutor should have good literacy in IT and able to access the internet/a personal cell phone (references also required).

- iv) The proposed institute/management team must have evidence for financial backup and capabilities from a reputable bank that is known in the UK. Hence demonstrate ability to collect full fees from students at the beginning of each academic year and to forward the fees due to the IETP in the UK on time and as will be required. [Must also facilitate the safety and accommodation needs of all UK visitors when in th host country].
- v) To confirm that your institute is prepared and able to provide premises up to the required standards by way of Health & Safety, access to excellent lecturing rooms and adequate facilities for students' requirements (to include education libraries, access to internet and computer/printing/photocopying equipment. As well as agree to produce the required material for the BEC imaging, logos and marketing within your institute, as will be designed and required from the IETP.
- vi) Agree to develop a local and timely marketing campaign for the promotion of BEC programmes and for recruiting suitable students, particularly those who are high school leavers and women returnees. All students must be fully sponsored by capable parents/employers from private and/or public sources.

What is on offer for the students?

- Potential BEC candidates (students) within the above countries will gain access to the following opportunities:
 - 1) **Access to higher education pathways in their home countries**, via the IETP in the UK, in a wide range of subject areas. **The BEC Study Programmes will initially include:**
 - **The BEC Foundation Programme (one year)**- all school leavers and new entrants to higher education must begin on this programme which will include English Language skills in subjects relating to the student's potential study programme with BEC
 - **The National Diploma (two years*)**- in *Management, Accountancy Book Keeping, Business Administration, Business & Finance, Health & Social Care, Health & Beauty*; all with IT. (other subjects will be made available subject to local demand at times of enrolment).
 - **Higher National Diplomas (two or three years*)**- current subjects same as above
 - **Bachelor Degrees (three or four years*)**- current subjects same as above
 - **Master Degrees (one or two years*)**- current subjects same as above
 - Each student should be required to demonstrate his/her minimum standards in English Language and in having secured relevant academic qualifications. These must be approved by the IETP in the UK, prior to any enrolment. [Pr-entry programmes may be available to enable students' progress. This will include support classes in English Language or in other subject areas].
 - Each student on a BEC Foundation, Diploma or Graduate programme must demonstrate the full achievement of the requirements for each programme before being fully awarded qualifications from the UK (thorough assessments, inspections, observations and portfolio support will be applied)
 - A student may continue his or her programme of study with the IETP in the UK at any time, if he/she wishes to do so (subject to compliance with Immigration procedures for entry clearance as a student in the UK)
- 2) **Achieve internationally recognised qualifications from the UK.** These will be awarded and authorised from the relevant university/college, BEC and from relevant education authorities in the UK.

Make a Significant reduction on the costs of studying & living in the UK, by choosing to study near home/family/work in own country. *[Please note- foreign students in the UK could incur a minimum of £16,000 per year. Studying with BEC in your home country (& by your family) will incur no more an average of £6000 per year, hence savings may exceed 160% per student]*
- 3) **Support cultural and religious norms** within the above countries, by removing barriers to access high quality British education. This is particularly for those who are unable to travel & live alone in the UK. (e.g. young/single women). Hence enhanced career prospects and development opportunities for all

- 4) **Receive support and lectures from carefully selected local staff**, who will be highly trained by senior lecturers and education consultants from the UK, including inspections, observations and detailed monitoring of their lecturing/education service standards. Please also note, from time to time UK lecturers will also deliver lectures face-to-face to students, as well as lectures by video conferencing, on-line interactive teaching and relevant educational & programme material from the UK.

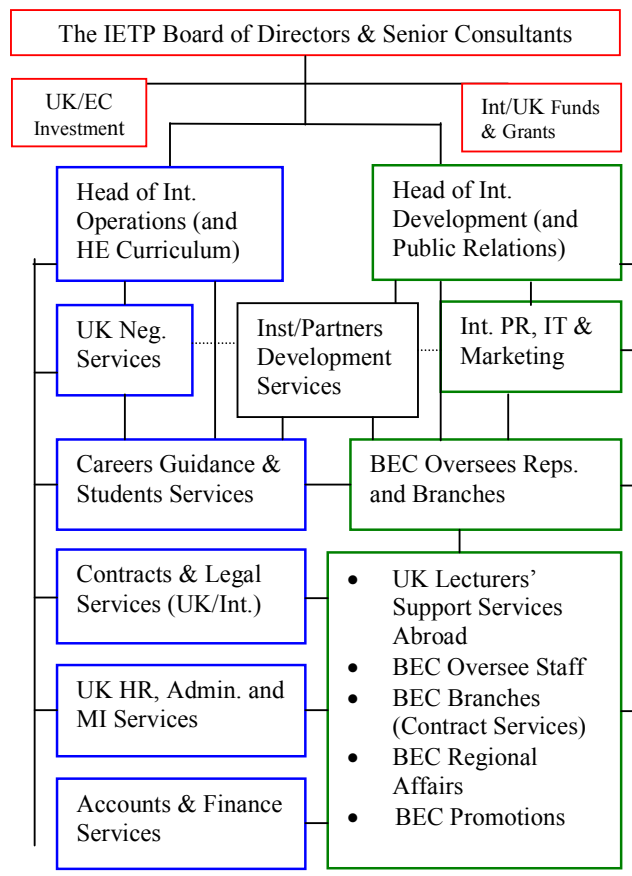
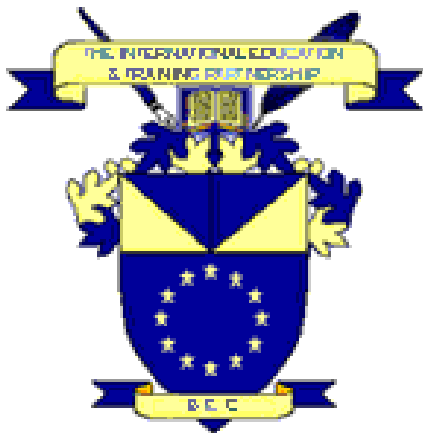
What will the nominated BEC Institute (partner/investor) & Management Team achieve in return?

The nominated institute (partner/investor) and selected senior management will secure the following benefits:

- 1) Reputable national educational status as members of the IETP in the UK
- 2) Full training & development for both the management team and to each tutor delivering a BEC programmes from UK specialist and senior lecturers on regular basis. Senior members may also be invited for training in the UK from time to time. BEC will joint promote its activities with the partner/institute.
- 3) Presence, appearance and reputation as member of a high quality British educational establishment in own country. This will include the use of logo and promotional material within the BEC section of the Institute, material for publication/media, presence of inspectors, observers & senior lecturers from the UK
- 4) Excellent financial returns to the management team/partner and high fees for all tutors involved (to be based on successful achievement of students' enrolment and retention on each programme).

Interested investors must forward their full expression of interest to the IETP in the UK no later than 30th May 2008. Please forward your initial response by e-mailed to The Head of International Operations via: enquiries@britisheducationcentre.co.uk

Company & Operations Structure





THE BRITISH EDUCATION CENTRE
 FOR HIGHER EDUCATION & INTERNATIONALLY APPROVED QUALIFICATIONS
 Member of The International Education & Training Partnership Ltd.



In association with  **Solicare International**

The UK Partnership (BEC Providers)

The International Education & Training Partnership develops links with known British Universities & Colleges of Higher Education and with Academic Institutes recognized for their Quality Standards in Education Studies, Occupational Programmes & Vocational Developments. The BEC Network of Providers (Partners) is concentrated mostly in London and in the South East of England.

The Network of International Education & Training Partnership in the UK



BEC Partners in the UK

- **BEC Higher & Further Education Colleges for HNC, HND & Foundation**
- **BEC Universities for HND and Graduate Studies**
- **BEC Vocational and Occupational Training Services**

- Management Studies & Info. Technology
- Business Studies & Information Technology
- Administration & Information Technology
- Business & Finance Studies/Management
- Accountancy & Book-Keeping
- Supervisory Skills & IT
- Health & Medical Studies
- Hair, Health & Beauty Care

- Public Services Studies & Management
- Health & Social Care Studies & Management
- Mechanical Engineering Studies
- Electrical Engineering Studies
- Construction & Civil Engineering
- Agricultural & Horticultural St. & Engineering
- Creative & Performing Arts
- Catering & Hospitality Management

For more information about BEC services:

Email: information@britisheducationcentre.co.uk
enquiries@britisheducationcentre.co.uk

Or Telephone: (+44) 1843 237513
Fax: (+44) 1843 835557